

Artwork by **Marino Collecchia**
Florence office

Lentius, profundius, suavius

***Ecological conversion can only take hold
if it appears socially desirable***

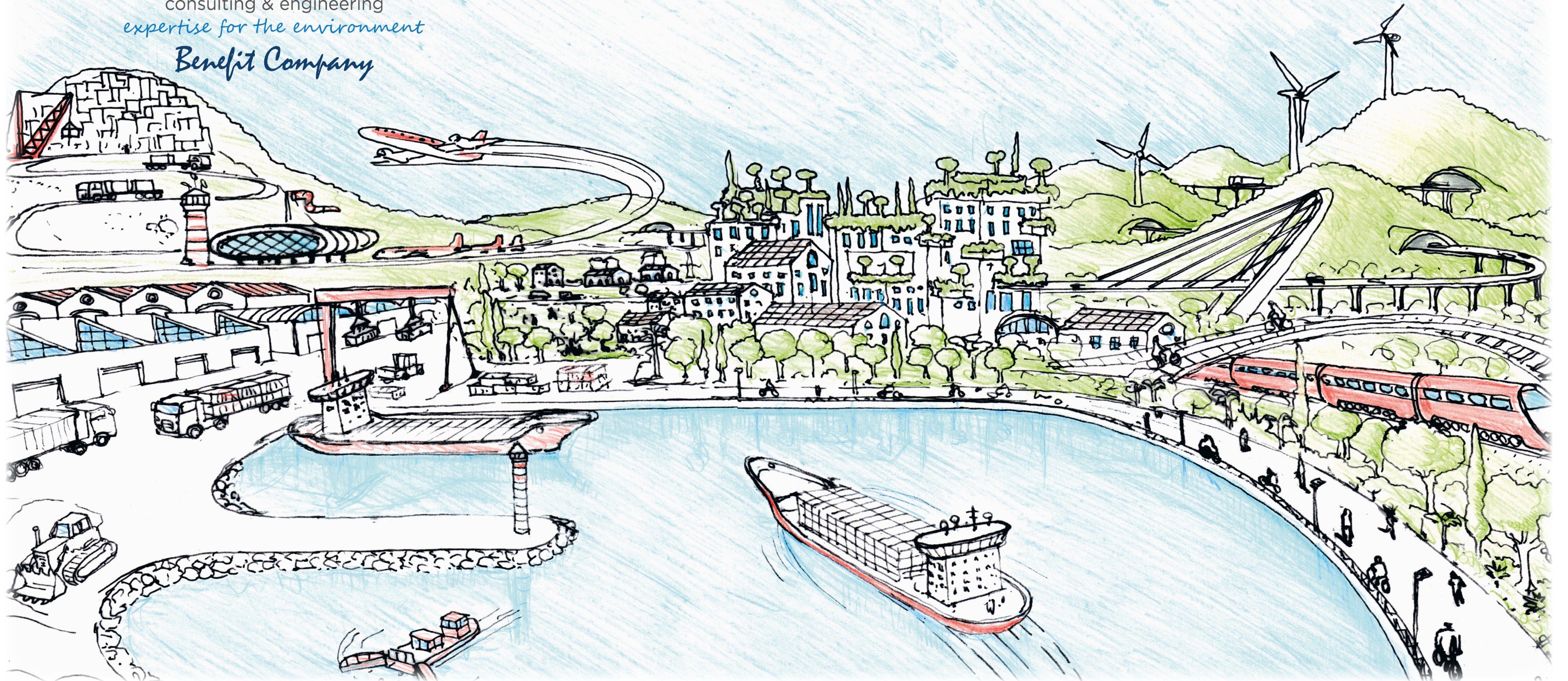
ALEXANDER LANGER



consulting & engineering

expertise for the environment

Benefit Company



ambiente spa

the history
the current context
our sustainability
the activity
the mission
the offices
the clients
the operational approach
internal organization

"Sustainable development is a development that meets the needs of the present without compromising the ability of future generations to meet their own needs"

Our Common Future, 1987
Brundtland Report





Artwork by **Beppe Francescani**
Carrara office

the history

PIONEERS IN ENVIRONMENTAL CONSULTING SINCE 1984

Environmental legislation was just in its early days and collective awareness still very immature.

There were still no regulatory or market assumptions that could make the idea of "doing business" from the **topics on environmental protection and safety in the workplaces**.

For a group of visionary young "innovators" with a vocation and desire for new and independent work and a special sensitivity to environmental issues, the time was right for a new entrepreneurial venture.

The first location of **ambiente** was a office of two small rooms in the center of Massa.

"Everyone of us took care of any kind of chores: surveys and technical reports, photocopying and binding, secretarial and administrative work. Just typewriters and not even a computer, the first one came a few years later."

***A dream seems like a dream
until you start working on it.
And then it can become
something infinitely greater***

ADRIANO OLIVETTI

the current context

ENVIRONMENTAL SUSTAINABILITY IS EVERYDAY

Today's industrial scenario is substantially different from 1980s, when **ambiente** was born.

There is a growing awareness that environmental sustainability is a necessary step for **competitiveness**.

Today we no longer talk about environmental costs, but about investments that benefit the added value of products. **Investments are geared toward both production cycle and product sustainability.**

Industrial culture has now become sensitively integrated with environmental culture. **The management of environmental issues has become a recognized and authoritative corporate function**, present in the organizational charts of companies of all sizes.

Environmental issues are managed in an organizational and planned manner, and compliance with the environmental standard is an integral part of the company policy.

Emergency interventions remain relegated to the sphere of the extraordinary. New technologies and new business organizations enable compliance with the rules and limits set by the standards.

Digitization, skills integration and sustainability

are today the keywords of successful business models defining their **competitive advantage**.

our sustainability



#Conciliambiente

A project funded by the public call **#Conciliamo** of the *Department for Family Policies*, aimed at financing Corporate Welfare actions.



Since 2020 we have been developing and publishing our **Sustainability Report** to transparently and proactively communicate our journey toward a sustainable future for all.



As of December 2022, we have become a **Benefit Corporation** in order to internalize in our mission commitments of common benefit, bequeathing them to future generations not only of the company, but also of the local community.



Quality - UNI EN ISO 9001
Environment - UNI EN ISO 14001
Safety - UNI EN ISO 45001
Diversity and Inclusion - UNI ISO 30415
Gender Equality - UNI/PdR 125
Ethics - SA8000



July 2023
First Edition of OICE Awards to Engineering and Architecture Organizations

First Prize Category A
ESG/Sustainability



the activity

OVER THIRTY-FIVE YEARS OF EXPERIENCE

The daily confrontation with ever-changing problems, **in over 35 years of activity**, has made us strong with a unique experience that we make available to Companies and Institutions.

Environmental legislation is our center of gravity and the adaptation of all human activities to laws and rules with respect for the environment and community life, our **mission**.

From the most historical to the most current environmental issues, we are able to give comprehensive answers to both the adjustment of the present and **sustainability strategies for the future**.

The **multidisciplinary** and **interdisciplinary** approach allows us to holistically address environmental issues in every field of application, from **industry** to **energy**, from **infrastructure** to **oil & gas**, from the **remediation** of **contaminated sites** to **urban** and **natural land**.

We design, in shared with our clients, virtuous paths of **continuous and sustainable development**, transforming environmental concern and compliance into new opportunities and greater competitive advantage.

We accompany the **top management and management of organizations**, supporting their **operational and growth path** to the realization of **strategic goals**.

We support the consolidation and development of acquired environmental excellence by proposing new goals for success and growth.

We are a **technical, multidisciplinary, interdisciplinary community**.

Skill growth, dynamism and flexibility are our drivers.

***Ingenuity is seeing possibilities
where others see none***
ENRICO MATTEI



la mission

SOLID ORGANIZATION, KNOWLEDGE IN MOTION

Our staff consists of **engineers, architects, chemists, geologists, biologists, agronomists, physicists, naturalists**, as well as **archaeologists, economists, lawyers, sociologists, communication experts, experts in workplace health and safety**, and in **all environmental issues**.

With our experts we work alongside the client's management and support its operational and growth path to the **realization of strategic environmental goals**.

We listen to needs and monitor funding opportunities and on environmental regulatory obligations.

We turn development goals into concrete and sustainable projects.

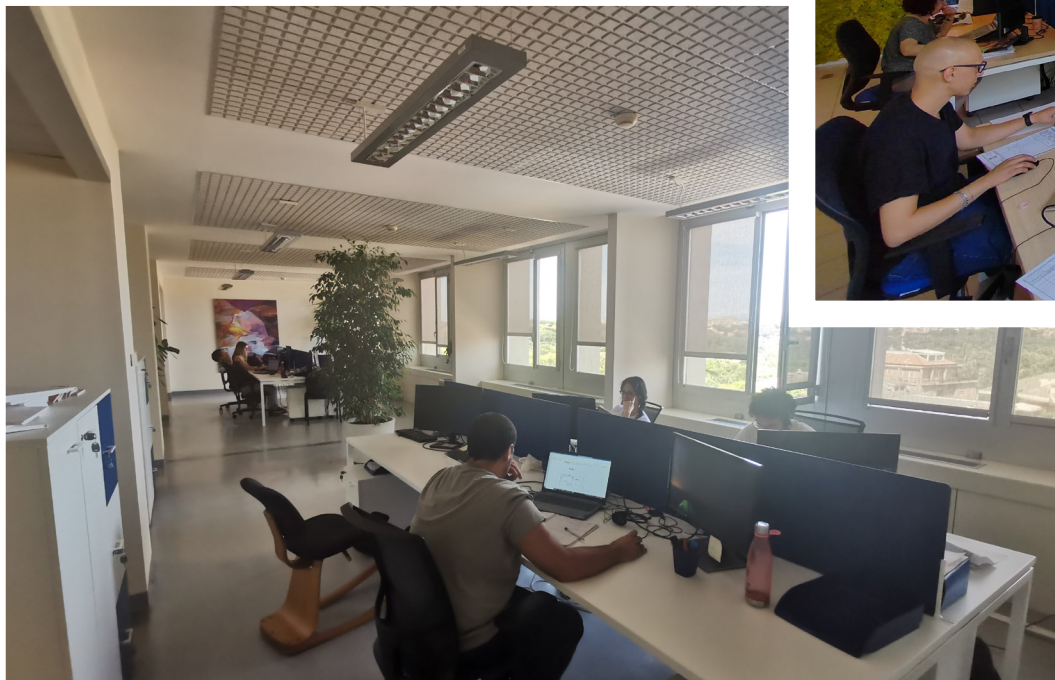
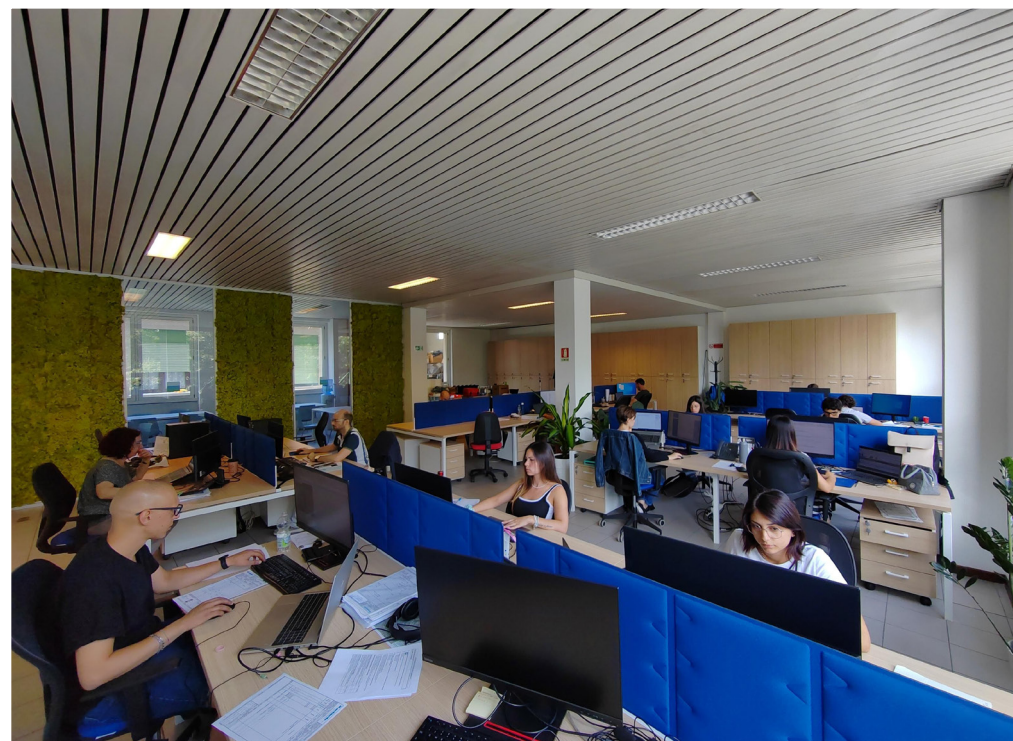
We design paths to create and enhance environmental sustainability achievements.

We support the consolidation and development of acquired environmental excellence. **We propose** new goals for success and growth for improved competitiveness and sustainability.

Sustainability and Innovation are our fundamentals: we are dedicated to **Research and Development**, participating in regional, national and international **calls for proposals**. We provide support to the to **implement sustainability-oriented innovation** and **research projects**.

Everyone's **specialized skills** are enhanced by the **multidisciplinary capabilities** of the group.

We contribute to the improvement of our Planet by participating in the achievement of the Sustainable Development Goals



the offices

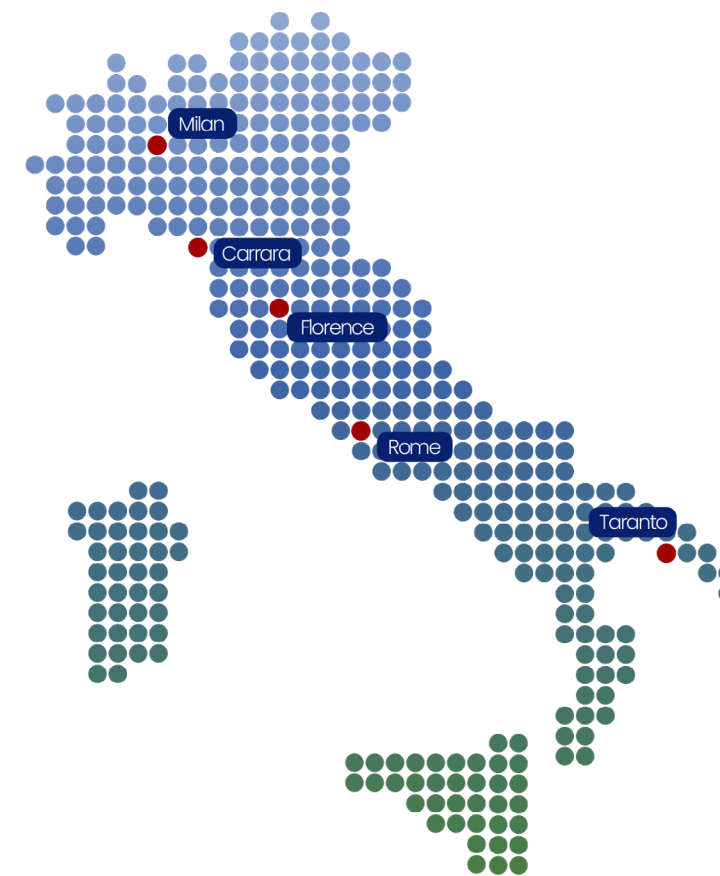
Carrara is home to the company's headquarters, the heart of the company, **a driving force for direction and coordination**, and an advanced base of operations in all technical areas. A modern, comfortable and eco-friendly office, surrounded by greenery, within a former chemical industrial site that has been recovered and regenerated to new life. In addition to offices, the headquarters also houses a large auditorium for conferences, seminars and training courses.

The **Milan** office, which is multidisciplinary and broadly diversified on the footprint of the main office, is undergoing strong development in a new building that is functional and more prospective.

An interdisciplinary broader group on workplace **safety** is active in **Florence**. The office has an important production asset in the **infrastructure, rail, tramway** and **airport sectors** and is involved in all transportation development in the Florence area.

The **Rome** office has three focuses: design on energy efficiency, environmental design in construction, permitting and impact assessment in the Oil&Gas and Utilities sectors.

The **Taranto** office follows most of the orders in the southern and island areas. It has a multidisciplinary footprint and is the natural bridge for activities in the Mediterranean basin.



*The reality of each location of being close to its territory and its peculiarities, combined with the **ability for multidisciplinary** integration between different locations, creates an excellent hub of expertise for our clients wherever they are located.*

the clients

AN APPROPRIATE RESPONSE FOR EVERY NEED

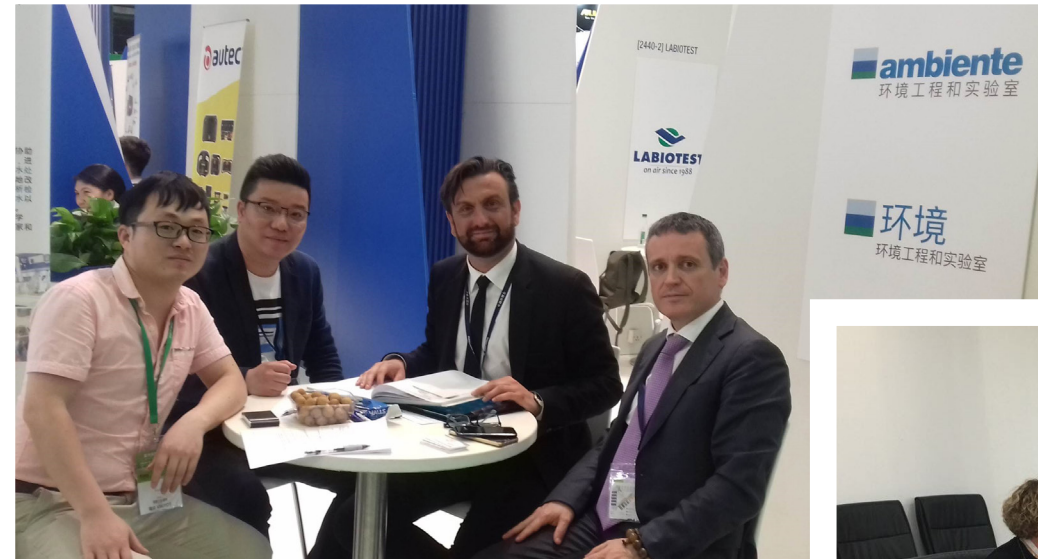
We work for **public and private enterprises, engineering and architecture companies, SGR and Real Estate** and for **Public Administration**.

Our clients include large industrial companies, leaders in the Oil&Gas, infrastructure, logistics and construction sectors.

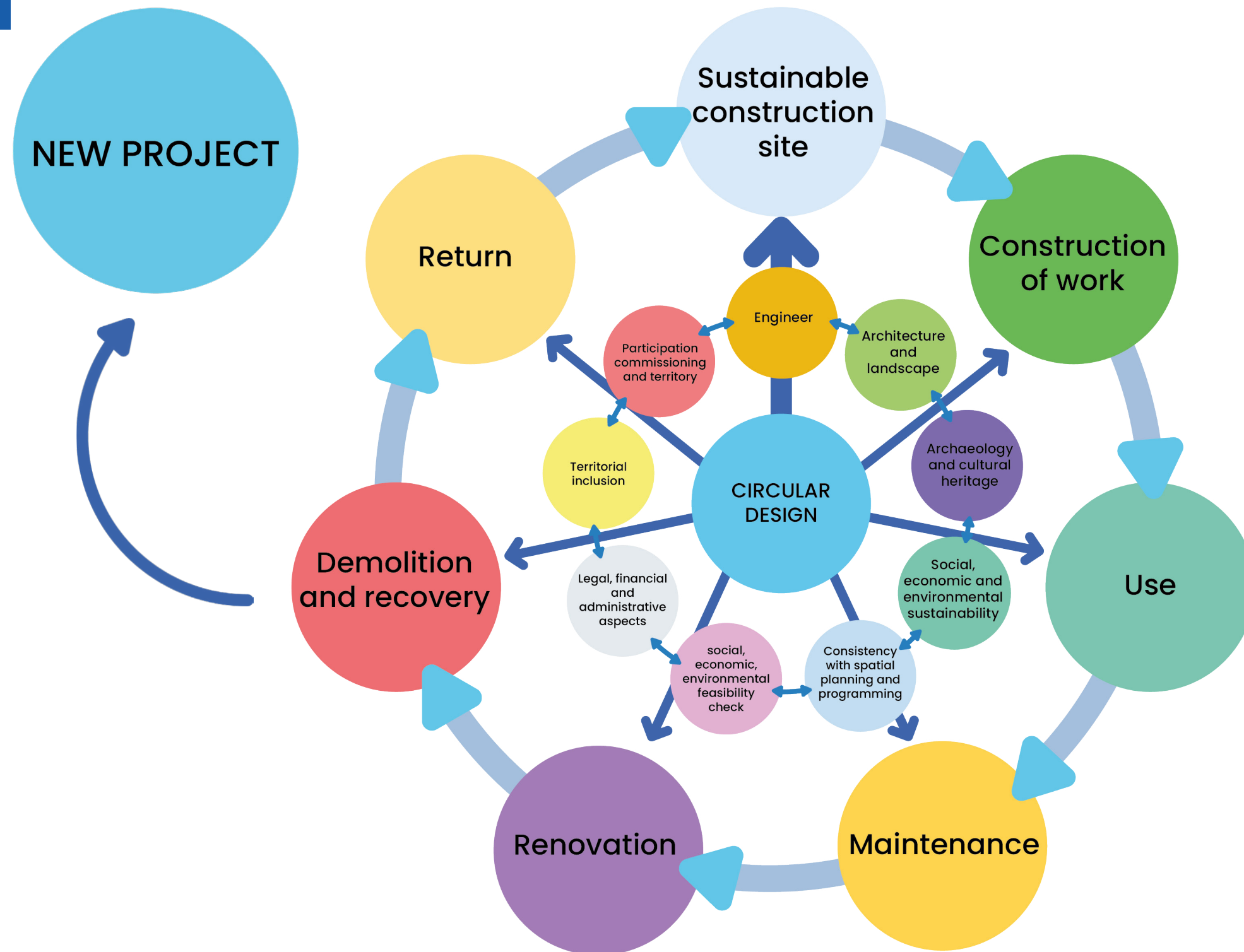
We work alongside major financial and industrial groups involved in urban and industrial **development** and **upgrading**, large utility companies in the water, waste, and gas sectors.

Internationally, we participate in projects promoted by **International Financial Institutions (IFI)** to support environmentally friendly development of European and non-European countries.

*We look ahead: we offer concrete and factual resolution to immediate needs, propose studies and analyses for **new development projects: sustainability, circular economy**, and any new challenge that comes our way.*



circular design



the operational approach

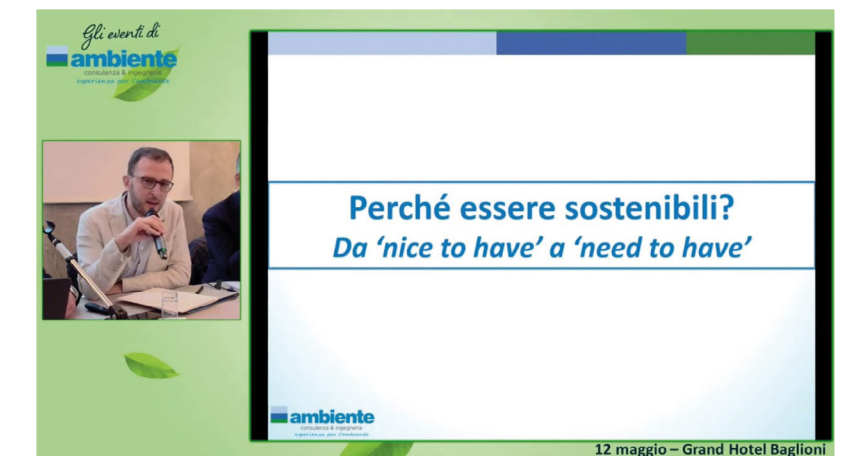
PROJECTS ARISING FROM INDIVIDUAL NEEDS

Solid skills, multidisciplinary approach, constant updating, effective dialogue with institutions, ability to diversify and update activities according to regulatory evolution and changed social and cultural demands: these are the characteristics that make us the appropriate partner in solving any problem related to environmental regulations.

We offer the guarantee of a sustainable, integrated and synergistic design between the various issues, in compliance with the regulatory requirements of reference and attentive to the cost-benefit ratio.

Our company's goal is to identify the best response for each individual situation, both in professional terms and in terms of economic and environmental sustainability.

We manage the relationship with regulatory bodies, working alongside clients in this complex activity, from the study and design phase to full operation.



Our goal is to **transform environmental concern into new development opportunities** and competitive advantage for client companies.



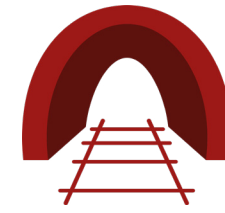
Artwork by **Marino Collecchia**
Florence office

the internal organization



Environmental Remediation

24



Infrastructure & Territory

28



Industry & Energy

36



Sustainability & Innovation

42



The sector

environmental remediation

The principle that has always pervaded our work is to **provide an activity aimed at complete remediation**, from an assessment and diagnostic phase to the acceptance of the completed remediation, taking care of the operational activities and the required regulatory compliance.

Our goal is that the **relationship between the quality of the remediation intervention and the cost required for its implementation is shared and sustainable for the client.**

We have solid experience in the field of **polluted sites management**. Since 1990s we have been performing for private operators or public bodies, environmental consulting activities related to the technical-administrative procedures necessary to define the degree of contamination.

We have developed relevant expertise in the field of **pollution by hydrocarbons, solvents, heavy metals, various petrochemicals and organic substances in general.**

We manage **emergency safety operations** and **remediation of contaminated sites.**

Vision and purpose of the project to define its environmental, economic, technical and social feasibility.

Preliminary environmental activities

- Preliminary Surveys
- Environmental liabilities due diligence
- Design of emergency safety interventions

Characterization activities

- Design and emplementation of characterization plans for potentially contaminated sites
- Surveys, sampling, analysis in river, marine and terrestrial environments
- Health-environmental risk analysis for estimating remediation objectives and prevention measures
- Hydraulic modeling for groundwater transport of pollutants
- Hydrogeological studies
- Study of natural background values

Design

- On site (AS\SVE, oxidation, landfarming, phytodepuration) and off site remediation design project
- Design of environmental restoration and upgrading interventions
- Design and implementation of pilot tests with remediation technologies
- Design, implementation and operation of hydraulic barriers and facilities for groundwater remediation

Construction Management

- Construction management of environmental remediation and restoration interventions

Other Activities

- Decommissioning Engineering
- Drafting of Land Use Plan and Materials Management Plan
- Land use planning for urban and special waste management



The Sector

infrastructure & territory

THE INFRASTRUCTURE

We are the appropriate partner for the construction of transport and public utility infrastructures. We take care of the aspects related to **environmental impacts** and **prevention and mitigation works**, from **site due diligence activities** to **environmental design**.

We are active in the field of **sustainable construction**, oriented toward design that ensures living comfort.

We partner with design and construction teams in teams to obtain **building environmental sustainability certifications**.

Our engineers, accredited as **Envision Sustainability Professionals**, collaborate with project teams to develop sustainable infrastructures.

We use **BIM, "Building Information Modeling"** designed to facilitate the collaboration of all Stakeholders involved in the project.

We design and develop Environmental Monitoring Plans on site activities.

We manage the **permitting phase for handling and delivery of waste materials from the construction site**.

We take care of all health and safety aspects on construction sites.

We design **Stakeholder Engagement** and **Public Debate** paths.



Reading the landscape, assessing the sociocultural context, understanding the project by anticipating the impacts they might have on the territory and communities. Make the work to be built sustainable, integrated into the territory, ready to fulfill the purpose for which it was conceived.

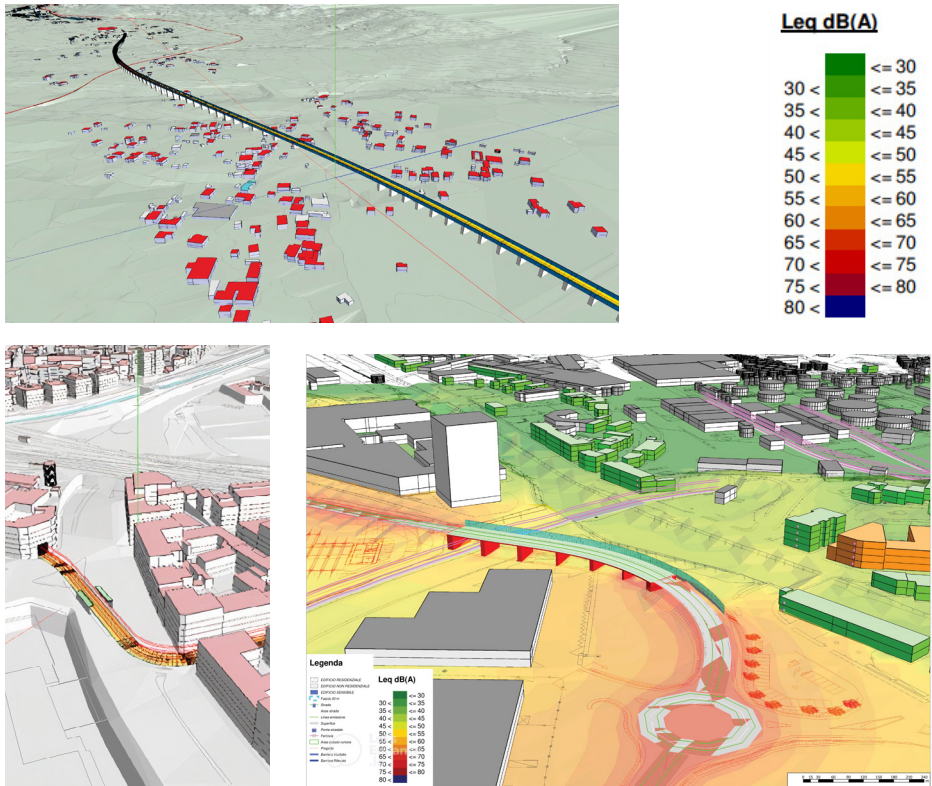


Environmental design

- Environmental Impact Assessment (EIA)
- Environmental design in accordance with **Envision SP** standards
- Tender consulting
- **Sustainable site** design
- Design of environmental monitoring plans (EMP)
- Design of environmental mitigation works
- Design of **Geographical Information Systems** (GIS) for environmental data management, consultation and dissemination
- Environmental design in **BIM**
- Predictive noise impact assessment
- 3D acoustic modeling
- Social environment monitoring
- Stakeholder Engagement

Environmental monitoring

Ante-operam, in-process and post-operam monitoring of the components: atmosphere, surface and groundwater, soil and subsoil, noise and vibration, electromagnetic fields, radon, ecosystem and biotic components, and traffic.



Construction site

- Development of **ISO 14000** and **EMAS** Environmental Management Systems and **HSE** Integrated Management Systems
- Dissemination of environmental culture and **appropriate training on constructions stage**
- Assistance toward regulatory agencies
- Comprehensive **waste chain management assistance**
- Traceability Management of **excavated soil and rocks**

- Manual, Environmental Emergency Plan, Specific Operating Procedures and Instructions, technical and professional fitness checks
- **Environmental Control Plans**
- **Management of Environmental Non conformities**
- Management of **authorization processes** (air emissions, water discharge/supply, waste)



Sustainable Construction Site

THE TERRITORY

We conceptualize **the territory as the place of coexistence and balance between communities, economic activities, infrastructure and the natural environment.**

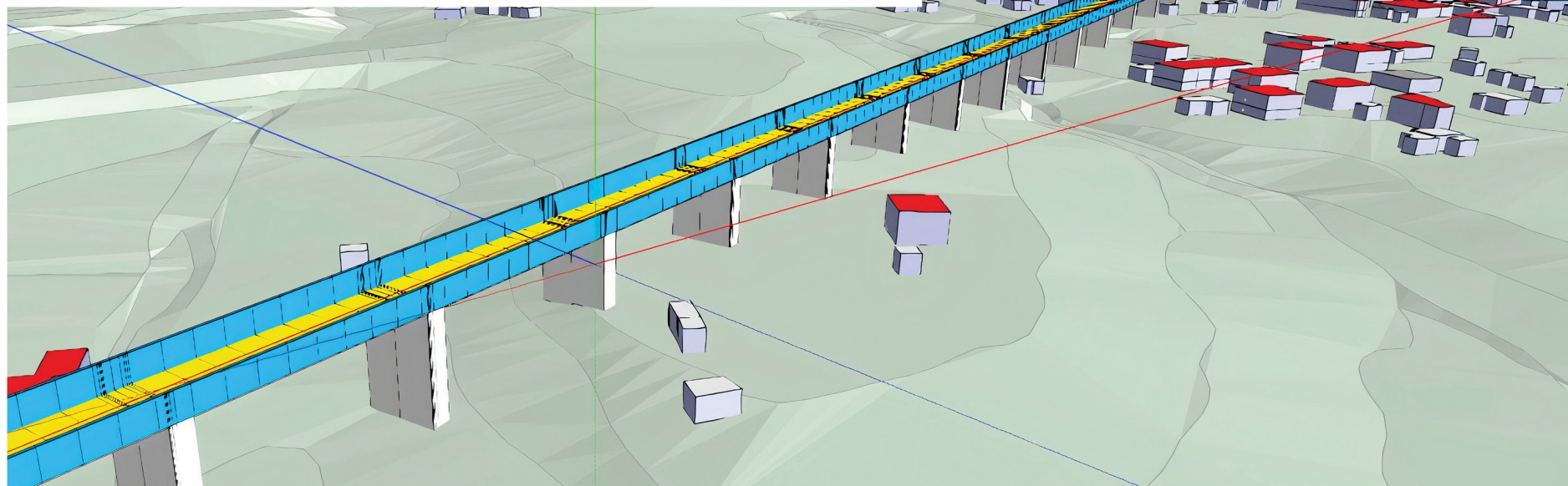
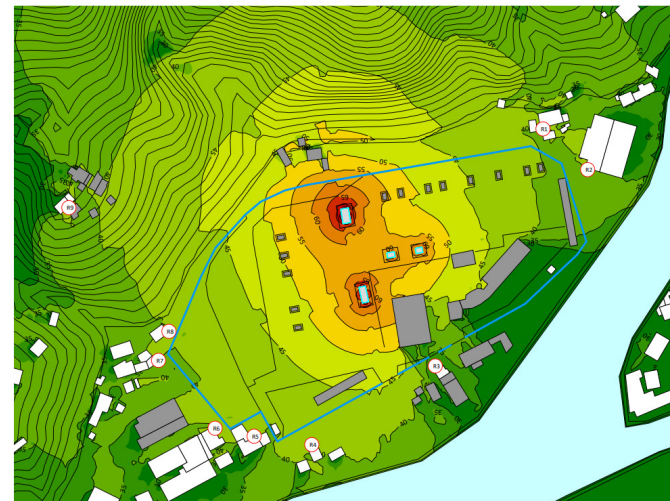
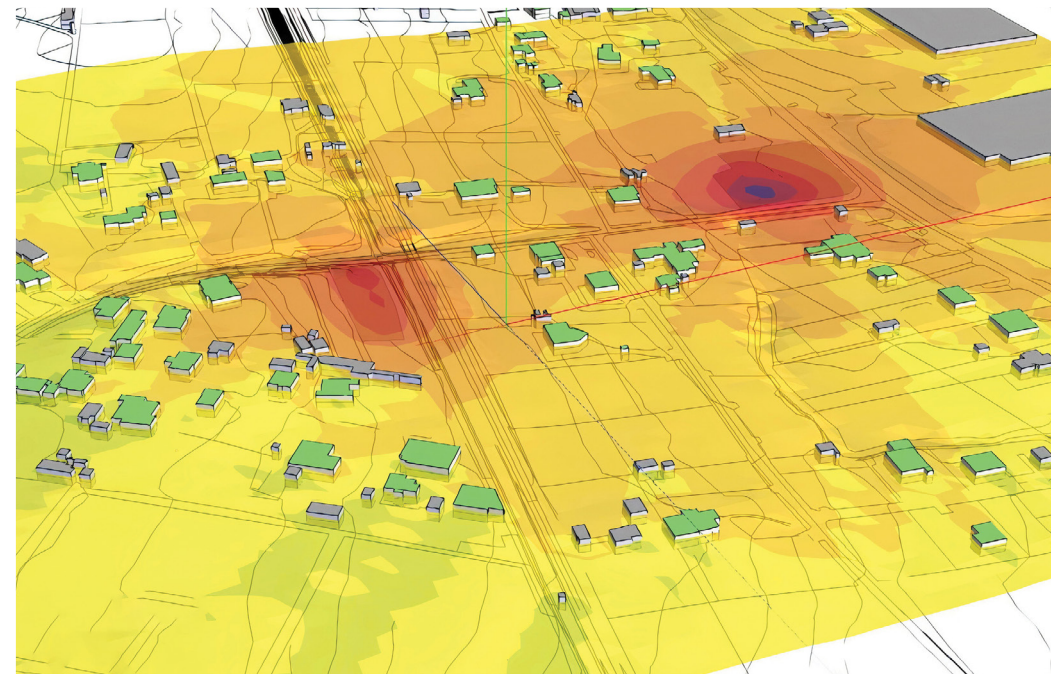
Having a thorough knowledge of the natural and man-made characteristics of a territory, being aware of its quality and health characteristics, is a fundamental condition for planning all economic and public service activities well as needed for the development of the civil community.

Knowledge and awareness

is the asset

for designing

*For **sustainable development.***



Environmental Physics

- **Noise impact assessment**
- **Noise and vibration impact assessments** for the construction, modification or expansion of large infrastructures and industrial plants
- **Acoustic and vibrational climate assessments for new**, planned or existing public and private residential settlements (schools, hospitals), close to the areas of construction of new infrastructures and industrial plants
- **Acoustic and vibrational impact assessments for verification of existing infrastructure regulations**



Environmental impacts

- Environmental pre-feasibility studies
- **Environmental Impact Studies (EIS)**
- Environmental feasibility studies
- **Landscaping Studies** and Reports
- EIA scoping
- **Impact** studies

Environmental planning

- **Strategic Environmental Assessment (SEA)** of plans and programs, as required by Part Two of Legislative Decree 152/2006 et seq. (Environmental Code) and the new regional regulatory provisions
- **Impact Assessment Studies** for plans and programs affecting the environmental protection of Sites of Community Interest (SCI, SPAs), natura 2000
- **Studies aimed at obtaining landscape authorization.**
- **Studies aimed at drawing up the cognitive framework of Structural Plans and Territorial Coordination Plans of the Provinces** (in-depth socio-economic, territorial, naturalistic, regulatory)
- **Municipal plans for the management and organization of Tele radio-communications systems**
- **Feasibility** and planning studies on waste and reclamation, water, air and electromagnetic pollution, and renewable energy development
- **Energy planning, acoustic zoning and noise remediation plans.**

Focus sustainable design

FOR RESILIENT COMMUNITIES AND CITIES

The new **challenges of Sustainable Design** are realized in the integration of environmental and socio-economic data through forward-looking multidisciplinary analysis and evaluation.

We take up challenges and go further: we support all stages of design with our know-how, focusing on the concepts essential for the development of **Sustainable Design**:

- resilience
- regeneration
- self-sufficiency
- social and urban innovation
- smart city

The tools we use are based on our 40 years of experience keeping up with the times, generating innovation, using the most modern information systems and the most advanced quality standards:

- we design in **BIM**
- we use **GIS** tools
- we adhere to **LEED, Envision, WELL** protocols

The **redevelopment of brownfield urban areas** offers many advantages from an urban-architectural point of view, lending itself to interesting transformations both in terms of volume and the arrangement and spaces rethinking .



We evaluate project planning from **regulatory feasibility to cost-effectiveness.**

We design and implement **environmental and social monitoring.**

the sector

industry & energy

We deal with all aspects of **environmental impact and land incorporation of manufacturing and public service developments**.

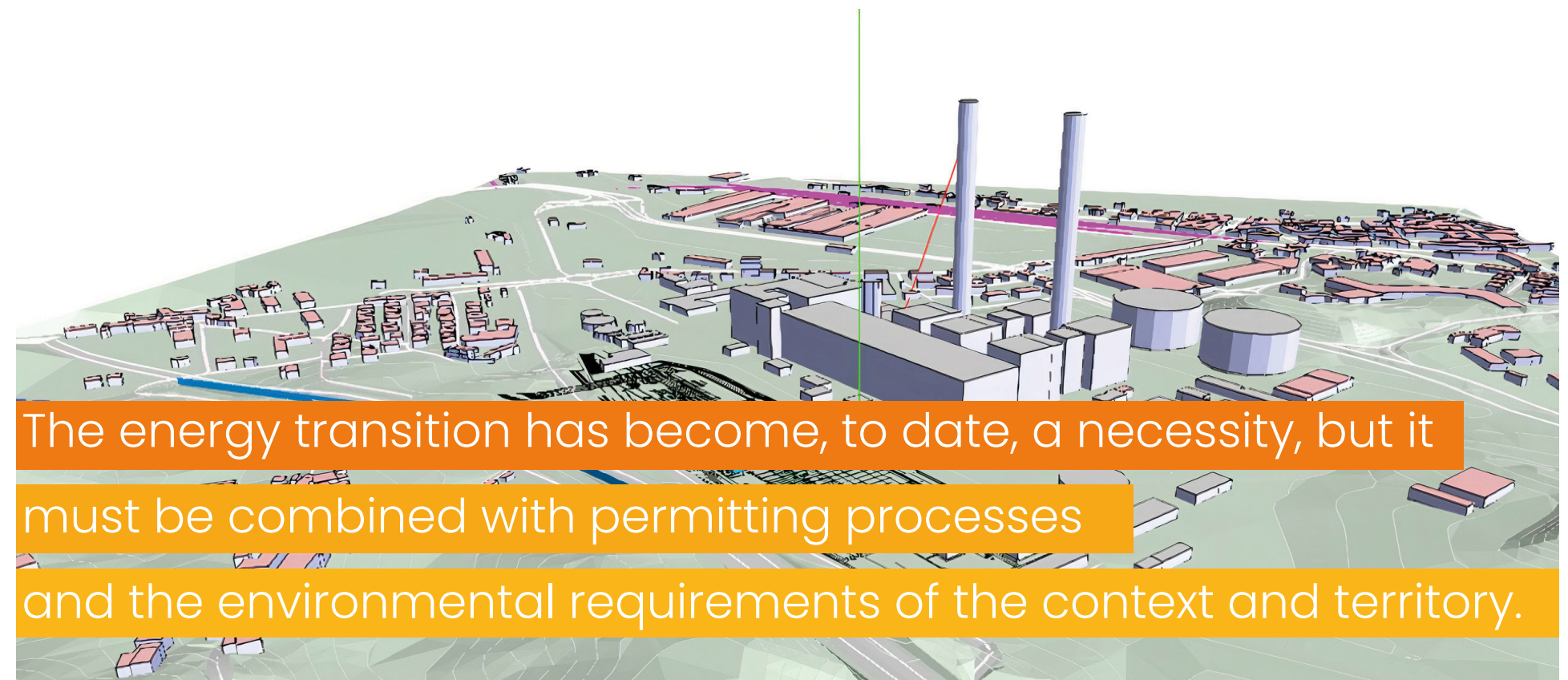
We intervene with **specialized expertise**, ensuring coordination and development of **integrated project**.

Our proposals, based on the **technical-economic feasibility analysis**, include the coordination of the various phases, from design to the development of the authorization route, integrating the **study and evaluation of all environmental and safety aspects**.

We coordinate and implement safety plans for **major accident hazard facilities according to EU regulations**.

We design and develop solutions for **energy management**, power generation and distribution, industrial production, and technological plant operation, with both established and innovative sustainable systems.

Current European Union strategies have stimulated the **increase of energy production from renewable sources**. We accompany companies from environmental constraint analysis to obtaining permits for plant operation including design of civil and electrical components.



The energy transition has become, to date, a necessity, but it must be combined with permitting processes and the environmental requirements of the context and territory.

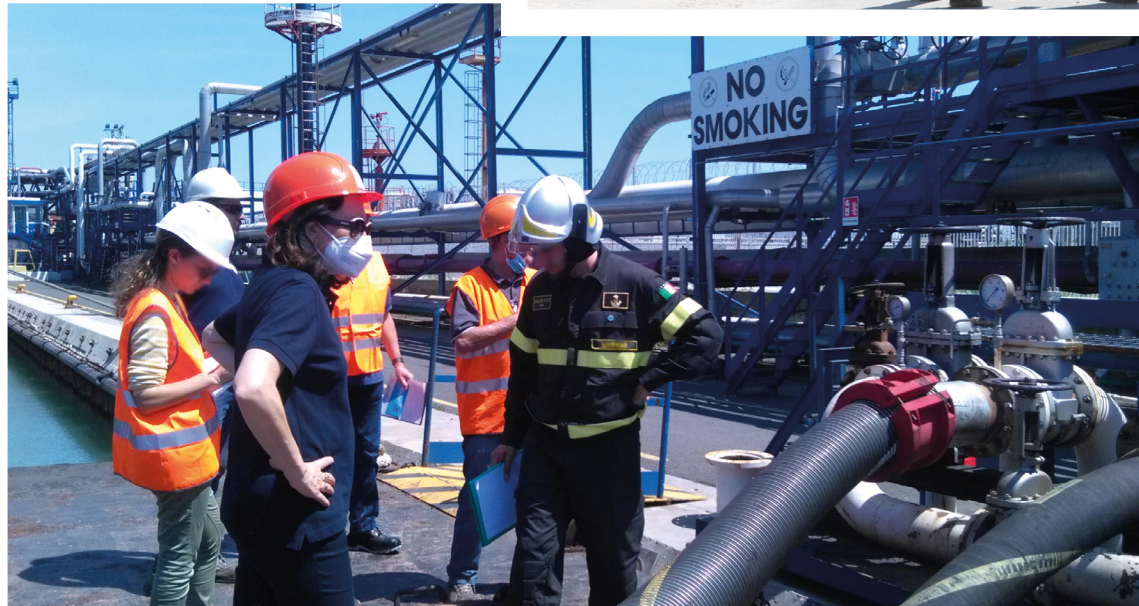


Studies

- Best Available Techniques **BAT**
- Environmental Due Diligence
- Environmental Impact Assessment
- Impact Studies
- Landscaping assessment
- Atmospheric emissions modeling
- Noise impact assessments
- Major accident hazard analysis

Permitting

- Integrated Environmental Authorization – **AIA**
- Single Environmental Authorization – **AUA**
- Single Energy Authorization – **AUE**
- Waste management Authorization
- Fire Prevention
- Single Regional Environmental Procedure – **PAUR**
- Authorizations RES plants



Construction Sites

- Construction site diffuse emissions assessment
- Noise impact assessments
- Environmental mitigation measures
- Waste, excavated soil and rocks
- Safety Coordination – **CSP, CSE, PSC**



Environment

- Environmental Permits
- Monitoring and Control Plans
- Development of Emergency Plans
- Implementation and support for **LDAR** protocols
- Major Accident Hazard (Seveso Directive)
- Odor Monitoring
- Emission Trading Consulting – Carbon Footprint
- Decommissioning Plans
- Assistance with relevant authorities and regulatory bodies

Monitoring

- Odors
- Noise
- Vibration
- Electromagnetic Field
- Chemical and biological agents

Safety

- Health & safety
- Prevention and protection service
- Emergency plans
- Project coordination
- Training
- Waste management consulting

Management Systems

- Quality – UNI EN ISO 9001
- Environment – UNI EN ISO 14001
- Safety – UNI EN ISO 45001
- Diversity and Inclusion – UNI ISO 30415
- Gender Equality – UNI/PdR 125
- Ethics – SA8000
- Implementation of organizational models 231



Focus

energy efficiency

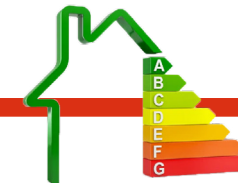
FOR SUSTAINABLE COMMUNITIES AND CITIES

Integrated solutions and services for energy efficiency in the civil and industrial sectors within energy management systems.

The concept of energy efficiency in civil and industrial use is regulated by UNI CEI EN ISO 50001:2011, which defines the minimum requirements that any system must possess to manage energy and its efficiency. More precisely, **energy efficiency** is defined as the ratio or other quantitative relationship between the results in terms of performance, services, goods or energy and the input of energy.

In the field of energy efficiency, we support our clients by offering:

- **Diagnosis and energy certification of** buildings to obtain the **110% Superbonus**
- Design of **RES** installations and **NZEB buildings**
- External **Energy Manager** service
- **Municipal Energy Efficiency Plans** (PCEE)
- **Sustainable Energy Action Plans** (SEAPs)
- **Energy audits and certification** of buildings
- **Energy analysis and optimization of production cycles**
- **Energy Efficiency Certificates**
- Technical and scientific consulting



Superbonus 110%

The **110% Superbonus** is a new tax incentive for energy and seismic upgrading of existing buildings put in place to boost the economy after the COVID-19 crisis and to improve the quality of our buildings.

• Defining the strategy of the intervention

Verification of the building upgrading needs and opportunities of the 100% SUPERBONUS

• Specialist Project

The project is essential for the intervention to comply with the stringent regulatory constraints of the 110% SUPERBONUS. The design must be carried out by technicians specialized in energy efficiency who will analyze the problems of the building, define solutions and translate them into a coherent and integrated project.

• Construction Management

The developed project should be carried out under the guidance of a specialized Construction Manager. A qualified firm with the right organizational capacity should be chosen.





the sector

sustainability & innovation

Research activities represent a meeting point between public and private research institutions and the world of production: **scientific progress and proposed innovations**, always based on **environmental sustainability, contribute to improving living and working standards in different economic and production sectors.**

The numerous research projects developed over the years enable us to approach the field of R&D, with expertise and experience, offering customers qualified support in the field of environmental sustainability.

- Evaluation of the current state (gap analysis and value analysis)
- **DNSH** assessment
- Strategic plans
- Sustainability reports
- Circular Economy Systems
- LCA, LCC and EPD
- ESG, SDG and Sustainable Finance
- **Green Transition**
- Waste Management
- GHG
- Specialized Higher Education
- **Carbon Footprint**
- **Carbon Neutrality**
- Stakeholder Engagement
- Integrated management systems

Focus

PNRR and sustainability

The **National Plan for Recovery and Resilience (PNRR)** was approved in Italy in 2021 and has three strategic points: **digitization and innovation, ecological transition** and **social inclusion**.

Sustainability-based activities are rewarded by investors and consumers: for this reason, sustainability is included in the economic agendas of every company.

We support Clients in their growth path with the **concrete involvement of environmental, social and economic assets for a fully sustainable development.**

We plan together with our Clients an organized and **concrete sustainability path**, capable of openly supporting a transparent and proactive confrontation with communities and investors.

We support our Clients with the pride of contributing to enhance development projects according to the principles of sustainability.

Focus circular economy

Evaluation tools and decision support for businesses

We are present at the most important discussion tables.

We participate to the **Technical Committee UNI/CT 057 circular economy**, national interface of the International Technical Committee ISO/TC 323 ("circular economy").

We attend Table 3 of the Italian Circular Economy Stakeholder Platform (ICESP), linked to the European Circular Economy Stakeholder Platform – ECESP.

We offer highly professional consulting services, starting with identifying the most suitable standard for the client's needs.

Our references in circular economy:

- **Afnor XP X30-901:2018 standard**

Certifiable circular economy management system. Contains requirements and guidelines for managing a new circular economy project or for managing an existing business project.

- **Standard BS8001:2017**

Circular economy guidelines aimed at companies and organizations. The standard provides practical solutions for implementing the circular economy in business and helps organizations manage their resources to **achieve economic, environmental and social benefits**.



We propose multiple solutions to initiate or accelerate the transition to the circular economy, each capable of promoting and enhancing specific aspects of the business:



Circular Maturity Degree Analysis: we guide the client in assessing the degree of circular maturity achieved, based on the **BS 8001:2017 standard**

Numerical Analysis of the Degree of Circularity: we measure the company's circular economy according to a transparent and peer-reviewable proprietary protocol, ideal for enhancing and directing the company's energies, again based on the **BS 8001:2017 standard**

Implementation of a management system for the circular economy: the company will be able to manage innovative and development projects with an internationally certifiable methodology, the **Afnor XP X30-901:2018 standard**.

Circularity Report: allows the company to frame itself relative to the circular economy and **communicate** in a structured and transparent way with stakeholders.

Specialized training to corporate top management: allows the organization to accrue awareness of the circular economy in order to embark on a solid and effective path, involving all levels of the company.



Artwork by **Marino Collecchia**
Florence office

 **ambiente**
consulting & engineering
expertise for the environment
Benefit Company

www.ambientesc.it

home@ambientesc.it



